



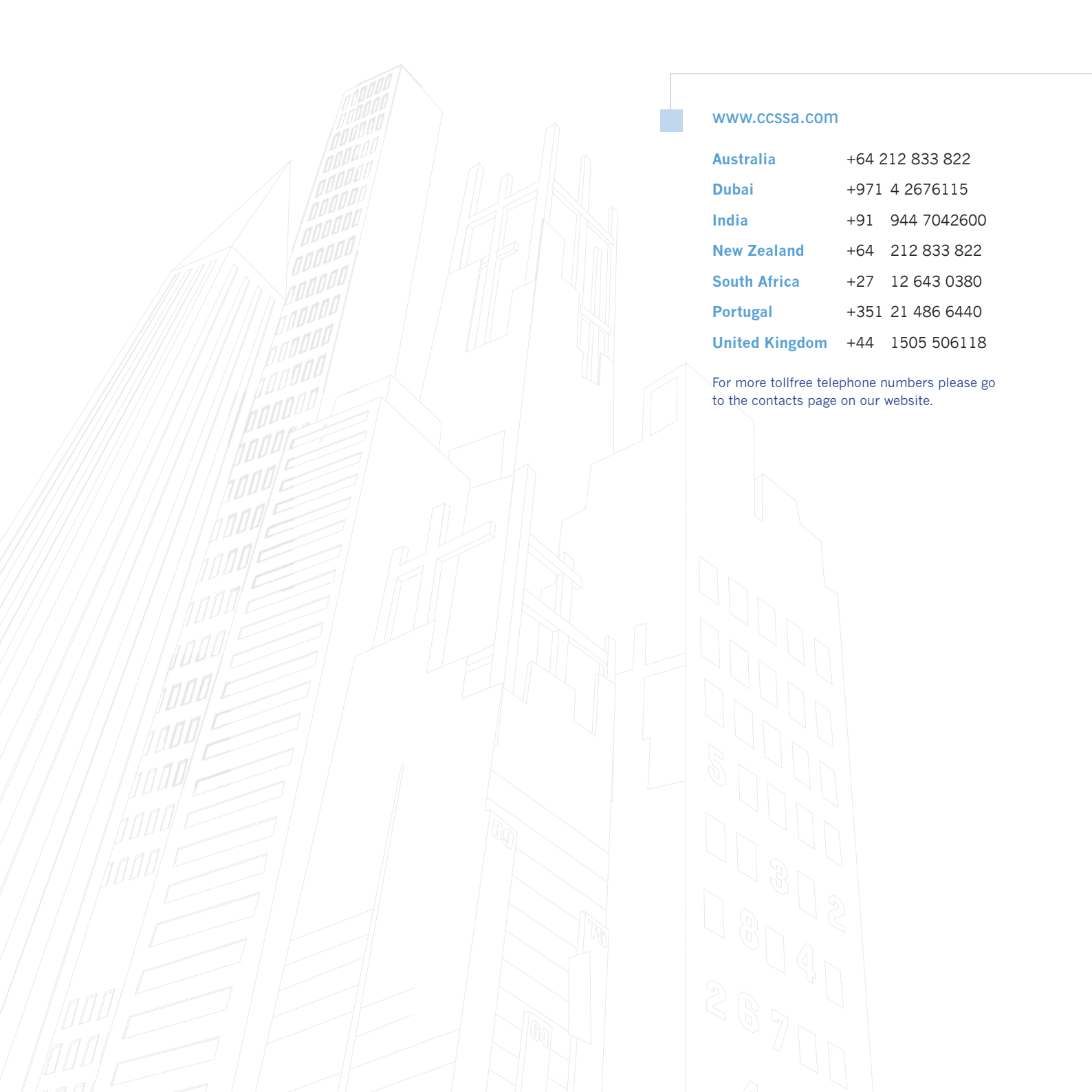
CONSTRUCTION
ENTERPRISE
ACCOUNTING

build **smart**

01 04 11 07 02 09 16 23
03 20 13 22 04 11 18
09 16 23 30 06 11
07 10 13 18 20 11
26 13 20 13 01 04 11 23
02 09 30 13



Construction Computer Software



www.ccssa.com

Australia	+64 212 833 822
Dubai	+971 4 2676115
India	+91 944 7042600
New Zealand	+64 212 833 822
South Africa	+27 12 643 0380
Portugal	+351 21 486 6440
United Kingdom	+44 1505 506118

For more tollfree telephone numbers please go to the contacts page on our website.

“It is not the beauty of a building you should look at; its the construction of the foundation that will stand the test of time.”

– David Allan Coe

build
smart

Construction companies in over 50 countries around the world have selected CCS as a complete solution for a compelling reason.

The solution was designed around the unique needs of the building, civil, mining and development industries keeping all disciplines in mind according to best practices.

We are construction professionals in all disciplines of contracting and therefore understand the language and challenges of these industries.

The fully integrated CCS solution provides the most critical and complete information required by contractors, to enable them to do an accurate comparison of actual and allowable cost, by contract.



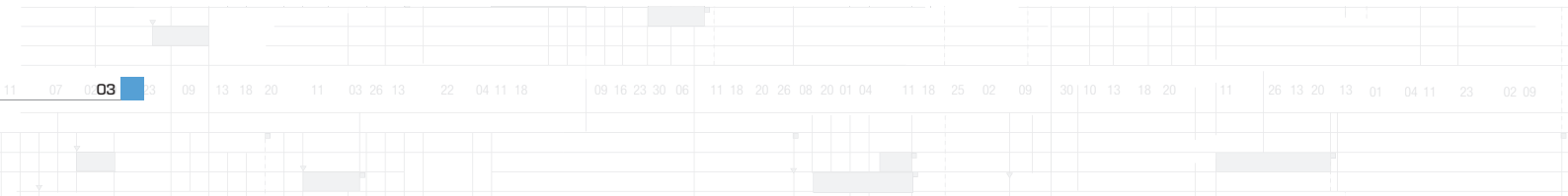


Estimating, Costing and ACCOUNTING

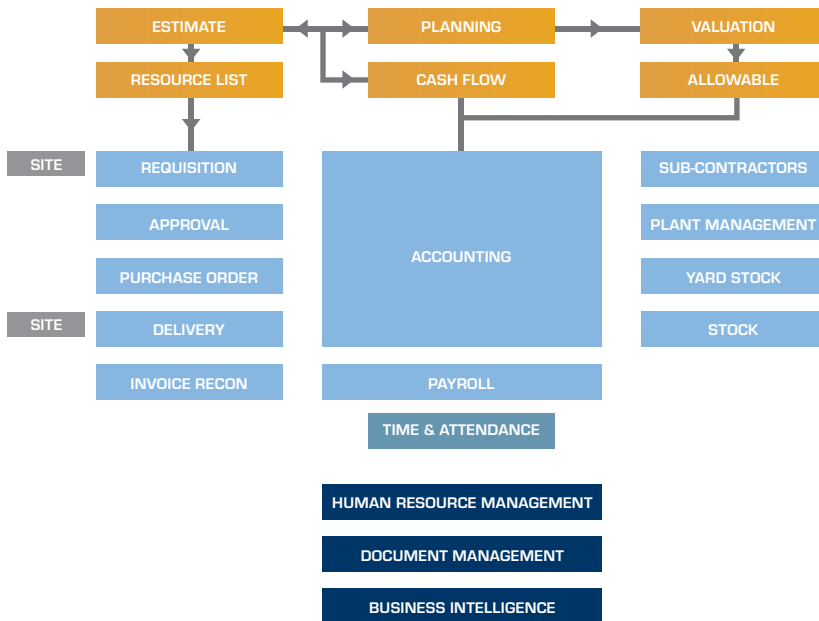
CCS is engaged in the development, supply, training and support of Build Smart and Candy Software.

Some key features are:

- The ability to match allowable costs with actual costs and get the variance thereof.
- The ability to obtain cost to date reports for specified periods over multiple years.
- The ability to track projected expenditure against actual expenditure.
- The BuildSmart solution is web-based, achieving high performance, scalability, inter-office connectivity and global data exchange over multiple currency.



CCS FULLY INTEGRATED Construction Solution



Request for QUOTE

This function is designed to enable contractors to obtain pricing details for new projects in an instant.

The system allows you to easily attach Bills of Quantities and related documents as part of the electronic request for quotation (eRFQ). This implies that you can forward the 'request for quotation' with a click of a button, either by fax, or by e-mail, or if required, accessed on-line by the supplier himself.

The system makes use of standard, freely available Internet technology and does not require any special software to function.

Estimators and buyers can collaborate by sending extracts from 'Bills of Quantities' to any category of supplier. The suppliers can also be assigned to more than one category and can be activated or de-activated for specific eRFQ's. The buyer-supplier relationship remains intact.

Suppliers select their own method of receiving eRFQ's, enabling those without Internet connectivity, to elect to receive their eRFQ's via email or fax.

Buyers and suppliers are informed of incoming eRFQ's via email or SMS.

When sending eRFQ's, the system automatically selects suppliers according to their category, and delivers the eRFQ based on the method of despatch selected by the supplier.

The buyer may at any stage obtain information regarding the status of eRFQ's.

Formatting documentation

A cover page, relevant terms and conditions, electronic Bill of Quantities, related documents, and individual line items, can be included with the eRFQ in most standard document formats. The supplier receives only his list of eRFQ'S, sorted by initiator (contractor) and at the click of a button can access all documents.

Convenient comparing

Suppliers can prepare prices, attach terms and conditions, and return the eRFQ on-line at their own convenience.

Complete Security Information is totally secure for both buyers and suppliers, and their related data is stored independently. User login names and passwords ensure that information is accessible only to the intended recipient.

Key features are:

- Paperless response to requests for quotations
- One login to multiple contractors/ buying organisations
- No special software requirements
- In use by major construction organisations
- Exposure to large buyer community
- Major improvements in tender processing efficiency
- Secure document storage and backup
- Full transaction logging and tracking



PROCUREMENT system

Our procurement system is fully integrated with our Candy system.

This means that the resource list made available by the Quantity Surveyor can be downloaded into the BuildSmart Procurement System at any point and time with the push of a button.

This enables the buyers to assess what to buy; what quantities to buy; and when to buy; using pre-determined pick lists, not exceeding the allowable quantities.

Site requisitions

Enables staff in remote locations to place requests for requisitions on the buyer list. The format is free text and allows buyer reply and comments. The site requisition can be re-directed to another buyer for expedition. Site staff can track the progress of the requisition.

tion. A simple login to the system will reflect the current situation.

Standard requisitions

Items for procurement can be selected either by organisation, or by contract, using pre-determined pick lists. The list can be downloaded from existing estimating systems in case you are not using Candy software.

The requisition can also access supplier product databases for product information and prices. The product databases can be pre-loaded from supplier defined catalogues.

Purchase orders

The requisition undergoes an approval process, following by the supplier receiving a purchase order via fax, email, or on-line.

Details containing delivery addresses, invoice addresses, full item descriptions, units of measure and discount details are displayed.

Deliveries

Each delivery captured on the system will produce costing information for inclusion into standard accounting packages. The SmartAct accounts system uses this information to produce cost accruals into the cost ledger.

Invoice reconciliation

An invoice reconciliation module

matches deliveries with invoiced figures and posts to SmartAct automatically.

Multi-users

The system caters for multiple organisations and is fully multi-user and multi-currency enabled.

Suppliers

Suppliers can log in to the system from any location, after security control procedures, and view their purchase orders. They have the ability to qualify the orders, accept or reject line items, and send qualification text to the buyer organisations.

In this way, both buyers and suppliers are kept informed in real time of the status of their orders.

Request for quote compliance

The system accepts input from the Request for Quote system, and produces an automatic requisition on the buyer.

Access

Using the latest technology, the system will allow access through a local area network, or wide area network as an Intranet or Extranet application.

Users can obtain access from any Internet Explorer® enabled workstation using a dialup or direct connect Internet connection.

PAYROLL system

Our payroll system is also fully integrated into the accounts and therefore you are able to see your labour cost as soon as you capture it.

Using the latest database technology, employee data is stored and available for historical viewing at any time. All runs are stored in detail. No need for restoring old pay runs for viewing. Simply select the period and run in question and view the information.

Security

The system caters for multiple users and role definitions. Users are allocated roles in payrolls and are given access to only those features permitted. Each user has a profile in the payroll and can only execute those features allotted to the user. All processes are recorded in the payroll log, all amendments to fields and entry and exits to processes are recorded and can be viewed by the payroll administrator.

Setup

The system comes loaded with all tax tables for the applicable country. Stamp sets are preloaded and standard earnings deductions sets are available to use as is, or can be modified to suite.

Integration

Information relevant to the payroll contained in the accounts and procurement modules are immediately available to the payroll. Projects, contract, divisions, activities and ledger



codes are fully integrated. Changes made in the other modules are available without the need to import any data from these systems.

Automatic postings to cost ledger and general ledger occur without the need for user intervention. The self-balancing process ensures that costs are accurately posted and the corresponding postings are done to the ledger system.

Contact us for a no-obligation demonstration and quotation.

Key features are:

- Unlimited number of employees
- Unlimited earning /deduction sets
Standard and user-defined calculations
All statutory calculations and reports
Industrial Council stamps
- Fully integrated with SmartAct Accounts
Flexible labour costing
- Hourly, weekly and monthly payrolls
Unlimited payrolls per organisation
Off site batch capture and imports
Integrated with site clock card systems

SUBCONTRACTORS Management

Our Subcontractors module caters for both Labour-only and Independent Contractors.

In the case of using Labour-only subcontractors the system allows you to subtract UIF, PAYE and VAT from employees that are actually part of your payroll.

This is a requirement by law and therefore needs to be managed carefully.

The system produces the agreement between you and the standard subcontractors automatically.

Key features:

- Client Variation Tracking and Retentions
- By Trade per Contract
- Sub Contractor Variations
- Provisions for Cost to Complete
- Project Report
- BEE Status
- Subcontractor Reconciliations
- Manage payment by contract

STOCK system

One of the many challenges that construction companies face is the always varying quantities of available stock in different locations and site stores.

The challenge is to monitor the usage and resource allocation of normal stock to contracts as well as from contracts to site stores.

The BuildSmart Stock system is very flexible and practical as it allows you to create as many sites stores as required per contract and then in turn allow you to issue stock in and out of site stores over multiple contracts and projects.

Key features:

- Tracks what supplier will be delivering to what site store
- Allows you to do internal store transfers
- Custom make your units of measure
- Specify stock transaction types
- It simplifies the stock take function
- Creates stock issue notes
- You can issue bulk stock items to multiple contracts
- The delivery note gets automatically produced



YARD STOCK system

Many construction companies do not properly manage the usage of small equipment such as scaffolding, compacters, drills, etc. and these items make up one of the greater expenditures of any construction site.

ite Managers need to know on a daily basis what items are adding onto the cost of his site so that any equipment not being utilized is returned back to the site stores for availability to other site agents, eliminating unnecessary expenditures in terms of renting more equipment than actually required.

In the case of internal hire, it eliminates equipment being misplaced or lost, as

the person that booked the equipment, will be responsible for it.

The BuildSmart Yard Stock system is very flexible and practical as it allows you to create as many sites stores as required per contract and then in turn will allow you to issue stock in and out of site stores over multiple contracts and projects.

Key features:

- Internal Hire
- External Hire
- Custom units of measure
- Custom and discounted rates
- Setup custom rates for each item and method of hire
- Handles stock transfer notes
- External sale by loss/damaged goods
- Transfer notes

PLANT MANAGEMENT system

Big yellow plant items are expensive to maintain. It is therefore essential to manage these items, as whether the Plant item is standing idle or being used, it is costing any construction company major expenses.

Our Plant Management system caters for both known methods of handling Plant items namely SMR (Service Meter Readings) or Hourly Readings.

Job Cards can be issued to specific Plant Items in order that the cost specific to that Plant Item can be monitored. In turn this cost will be booked to the contact that the specific Plant Item belongs too, ensuring that all costs like Labour and Overheads are costs to the specific division or project. This is possible because there is a Plant Leger resident in the Accounting system.

Key features are:

- Internal Plant Hire (Inter-company)
- External Plant Hire
- Costing of Maintenance
- Job Cards
- Fuel Management
- Issues from site bowser to Plant items
- Tracking of Credit Card transactions
- Fixed Cost Charges
- Minimum Hours
- Penalty Hours Charges
- Holidays and no charge days
- Utilizations
- Hire Costing Modules
- Classic Plant Revenue / Plant Cost Accounts
- Special Rates
- Multiple Workshops
- Multiple Workshops per Division with labour and overhead costs calculated
- You can purchase to a Job Card from the standard procurement system
- Budget variance reports
- Handles new meters



COST ACCOUNTING system

The BuildSmart Accounting System is the core of our system, as it is linked to all of our other systems. This allows our system to be the most powerful and best suited one for the contracting industry.

CONTRACTS

OVERHEADS

PLANT

BALANCE
SHEET

LIVE costs are fed into our four Accounting Ledgers namely, Over-heads Ledger; Balance-Sheet Ledger; Contracts Ledger and Plant Ledger. This results that there is no need to separate site-costing from accounts.

All postings to and from the Cost Ledger are also handled automatically by the system. The cost ledger is balanced with each posting. The ledger structure is user-definable and the control codes can be set up to trigger any event. The system caters for any organisational structure, with the addition of division, project, contract and activity costing.

Software

Web based architecture (ASP/.net Technology) Powerful Sequel Server database

Unique consolidation ability

Separate work-in-progress ledgers that consolidate into control accounts

Multi-Users

With multi-user access, multi-company (with consolidation), multiple accounting years and multi-currency capabilities, the system caters for the most demanding of accounting environments.

BuildSmart Accounting makes use of leading edge technology and offers the user unparalleled Wide Area Network access using dial-up or direct-connect lines.

User Access

User access is set up by organisation,

and individuals can be given certain rights and privileges unique to the organisation and individual. The menu screen may be adjusted to the user and display only the menu items permissible to the user.

Reporting

Reporting is quick and efficient with Crystal Reports®, and includes a large number of standard reports. In addition, the introduction of user-defined reports into the menu allows the user almost unlimited flexibility.

System Access

Using suitable Internet connectivity and access security, accessing the system from any location worldwide is easily accomplished.

Key features

- Valuation Cost Ledger
- General Ledger
- Creditors
- Debtors
- Subcontractors
- Plant & Equipment Management
- Stock Management
- Fixed Asset Management
- Cash Book
- Bank Reconciliations Creditor/Sub Contractor Cheques Remittance Advices
- Debtor Invoices
- Plant Hire Invoices
- BuildSmart Business Intelligence Document Management
- Costing Reports
- Cost vs Allowables reports



TIME AND attendance

The Time and Attendance system is fully integrated with the Payroll system and therefore allows you to observe your labour costs on a daily basis.



You are now able to manage and control Time & Attendance and Activity Costing information more accurately in any contracting or site environment, and ensure that labour is tightly controlled according to activities completed.

We believe that the CCS Mobile T&A Solution will benefit any contracting environment by offering reduced payroll 'losses', avoid over-clocking of labour and thereby increasing profits.

We achieve this by being able to:

- Accurately track labour & related activities
- Improve information flow from site to back-office,
- Seamlessly integrate into the payroll to ensure accurate labour costs are recorded in real-time
- Reduce manual capturing of timesheets and eliminate guess work
- Provide accurate management reports, the next day
- Reduce or remove the paper trail
- Remove duplication of tasks
- Speed up administration processes in office
- Reduce voice call costs
- Reduce wasted travel for workers

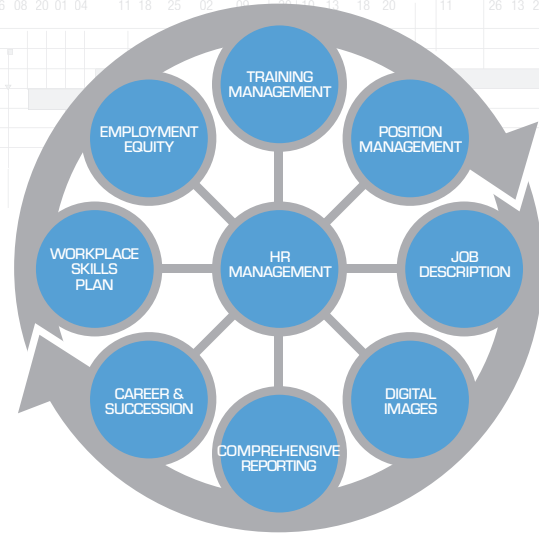
HUMAN RESOURCE Management

Our HR module is a fully Integrated and Comprehensive HR Solution that manages all aspects of the Human Resources

Our BuildSmart Human Resource Management System is a comprehensive HR administration and management system, catering for the needs of small, medium and large business within which all statutory and labour requirements are catered for. The system provides numerous templates and guidelines for procedures such as management of unacceptable performance, dismissals, appointments etc.

This module allows for the storage, manipulation and reporting on:

- All Personal information such as Names, Addresses, Next of Kin, Marriage details and Emergency Contacts;
- All information related to the Recruitment function (e.g. costs, agency details, positions applied for, interview results, etc);
- Images such as photos, ID documents, letters of offers, medical certificates etc;
- Disciplinary, Misconduct and Grievance history including warnings, hearings, outcomes and follow ups etc;
- Individual Training needs/reminders and courses attended including skills acquired, NQF statistics etc;
- Comprehensive Education and Qualifications;
- Comprehensive performance appraisal results, measurement, monitoring and follow ups;
- Medical info including examinations, accidents at work, allergies, disabilities etc;
- Job/work History and basic career advancement schedules/plans;
- Employment contract tracking
- Professional Affiliations such as unions, institutions etc;
- Exit Interviews (e.g. Reasons, follow ups, equipment returned, questionnaires, restraint details);
- Passports, visas and work permits;
- Clothing and Equipment monitoring;
- Licences, offences and renewals.
- Package, Loans, Retirement Info, Share incentives;
- Policies and Procedures (Attached on-screen);
- On-screen Forms (To print hard-copy and update etc);
- Email Notifications (Individual and/or bulk emailing);
- Employee Engagement and Discharge Audit checklists;
- Tax Authority and Department of Labour statistics;
- Comprehensive Job Descriptions including the basic information, personal criteria, performance criteria, qualifications, and skills and experiences required for the Job to be 'done' successfully
- Task Knowledge Base for commonly used tasks, performance criteria





and related criteria used for all job descriptions

- Organisational design including business elements and Positions, employee functional hierarchy design, vacancy management and potential succession management.

The system, using the information entered, helps to highlight non-conformance to Legislation pertaining to basic conditions of employment and labour relations, produces comprehensive Employment Equity Statistics and the various forms, and finally, produces the minimum reporting requirements for skills and training reporting (i.e. Workplace Skills Plans).

Key Features :

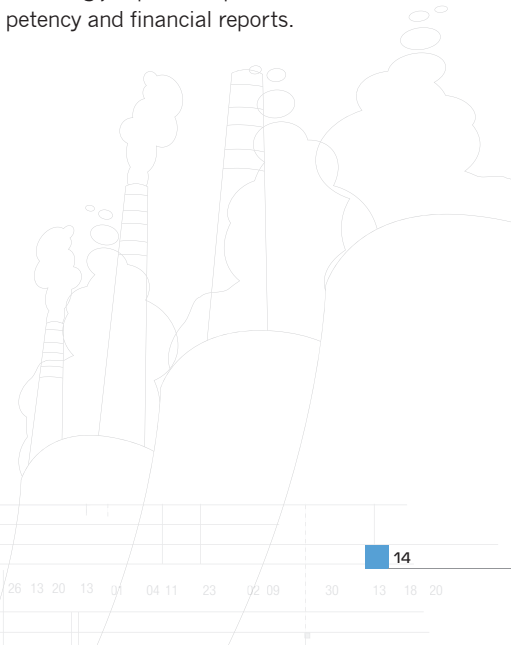
- This module covers all aspects of day to day personnel administration from recruitment to retirement;
- All screens are easy to read, easy to use and logically grouped;

- Security is available to prevent access to sensitive screens;
- All help text and user guides are available online;
- All Acts relating to HR Management (i.e. Tax Authorities, Basic Conditions of Employment, Employment Equity, Skills Development, etc.) are available online;
- Many standard forms, procedures and letters are available to enable the user to customize the system to suit their own requirements.

Many "point and click" type reports and statistics are provided in this module, examples are:

- Absenteeism statistics by day of week, Leave Liability etc;
- Labour Turnover, Termination reports, Exit Interviews;
- NQF, Training and Skills matrixes;
- Employment Equity statistics and compliance reports;

- Personnel reports;
- Quick Enquiries;
- Blank and pre-populated forms;
- MyReports (User defined common reports to be accessed at will);
- Clothing, Passports, Visas, Contracts, Education, Medicals, Accidents, Equipment, Licences, Dependents, Next of Kin, Emergency Contact, Disciplinarys, Misconducts and Grievances Summary Reports (These also include General and System Statistics)
- Position detail reports including vacancy reports, headcount and financial reports
- Organisational structure reports (organograms)
- Job Description detail reports including job profile reports, competency and financial reports.

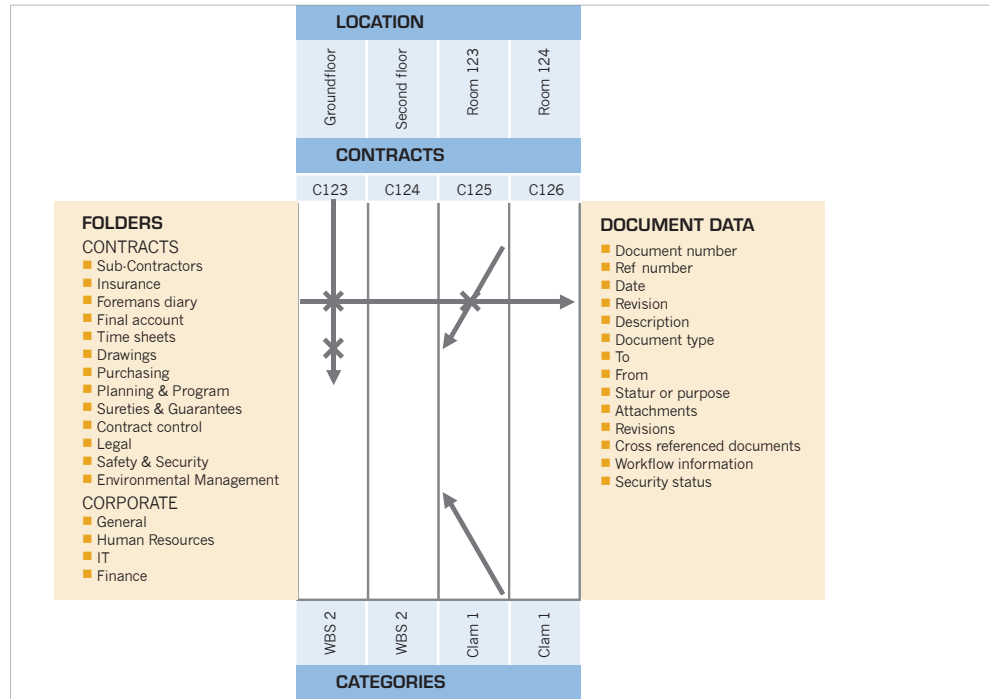


DOCUMENT Management

BuildSmart's integrated Document Management System (DMS) provides a comprehensive Contract/Project Management infrastructure for managing documents and communications of all types relating to Construction or Engineering projects, either in a centralised or decentralised environment.

Documents and related contracts are accessible from within BuildSmart

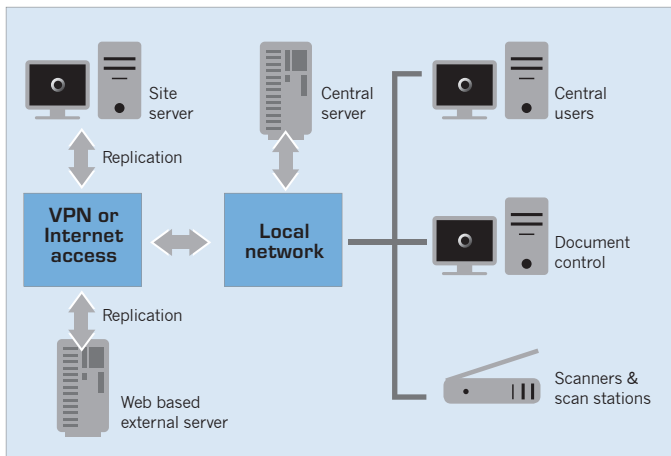
DMS manages all the documentation, other communications, and tasks for contracts/projects of all sizes. Its matrix-based structure, combined with its multilayered security and workflow management capabilities, enables it to be used not only to manage large complex contracts, but also to support the unique business processes of any construction group.



Manage and report on workflow

The core functions of DMS enable managers and organisations to:

- Manage all relevant records and interactions and to search and report on these in a number of different ways against numerous criteria.
- Establish new contracts/projects or sub-contracts, and to provide easy yet secure access to these for management and ongoing communication.
- Manage and report on workflow, including control over all incoming and outgoing official communication.
- Ensure tight multi-level security over all items both internally and externally
- Manage the details of all the entities (companies and individuals) involved in the project in one central database.
- Cater specifically for the functions of a project Document Controller/Administrator with responsibility for maintaining the accuracy of the document archive.
- Replicate selected parts or the whole of the project/organisational database over multiple sites and/or servers.
- Report in a number of ways to help control the flow of documents and responses required within given dates.
- Ensure that a comprehensive Drawing Register of all drawings relating to the project, including details of which drawings are current, is maintained.



Replicate selected parts

INSTALL ACCOUNTS User: Administrator In Organisation: Demonstration Company ID: 2

Current Period: 7 - September - Financial Year: 2008 Support | Contact Us | Dashboard | Help | Log

Clear View Selection X **Contracts List by Buying Organization, by Project**

Contract Number / Name	Contact	Client		
Demo Plant Hire South Africa				
Floods FIB Expansion				
712 Mandi Kraft HD Joint Venture	Anthony Marcus		View Documents	✓ 77 @ 50
Demonstration JV				
Bendale				
Contracts with documents are shown here				
462 Surcact Casp	L.S. Grant	Tadli	View Documents	✓ 77 @ 50
Demonstration Civils				
Demonstration Company				
KSH TEST PROJECT Document menu				
003KH KSH TEST project Inactive	A.P. Nolan	A.P. Nolan	View Documents	✓ 77 @ 50
003KH2 KSH TEST PROJECT 2	A.P. Nolan	A.P. Nolan	View Documents	✓ 77 @ 50
Building East				
001 Durban Contract	Alf Neubauer	Albert Caluogera	View Documents	✓ 77 @ 50
002 Richards Bay Closed Contracts	Chris Van der		View Documents	✓ 77 @ 50
003 East London Closed Contracts Inactive	Glen Bradford		View Documents	✓ 77 @ 50
004 MIB Test Contract			View Documents	✓ 77 @ 50
005 MIB New Project to Constructore			View Documents	✓ 77 @ 50
208 Small Works Overheads	Peter Steinhilber		View Documents	✓ 77 @ 50
201 Small Works Maintenance	Peter Steinhilber		View Documents	✓ 77 @ 50
202 Small Works Remedial Works	Peter Steinhilber		View Documents	✓ 77 @ 50

Document Management (Left Sidebar): My Inbox, My Sent Items, New document, Search, Contracts, Folders, Setup Document Types, Setup Folders, Setup Contacts.

Documents and related contracts are accessible from within BuildSmart.

Business INTELLIGENCE

A worldwide trend, where the role of MS Excel is being reinvented as a formal reporting platform, is now also available within BuildSmart.

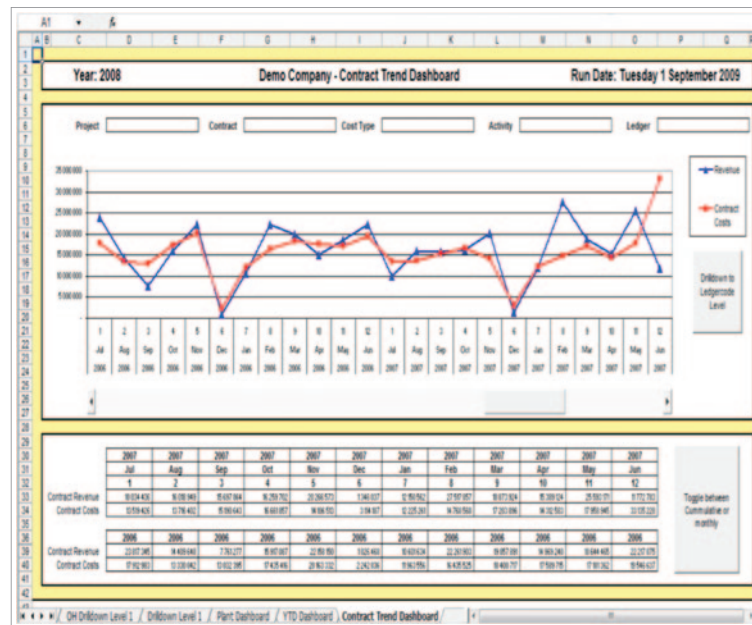
SmartBI offers powerful report writing functionality giving you, the user, freedom and flexibility to generate your own automated Excel reports, formatted the way you choose.

SmartBI is not just a reporting engine. Instead, bolt on modules fast track your ability to generate custom reports for all BuildSmart modules. With all the raw data already made available, all you need is advanced

Excel skills to achieve any reporting output.

SmartBI also ships with a packaged set of completed standard Excel reports, and as more reports are developed, you can download and import to your business intelligence module and make available to the relevant BuildSmart users.

With SmartBI, you can harness the power of the world's most used presentation platform, MS Excel, converting your BuildSmart data into true business intelligence.



Traditional problems solved with SmartBI

Although an estimated 30 million people utilise MS excel regularly, most suffer from the symptom known as Excel leakage. This inefficiency refers to the productivity lost via manual and repetitive report preparation tasks associated with the Export to Excel, or “cut and paste”.

The construction industry is particularly dependent on MS excel with millions of spreadsheets all harboring vast amounts of effort by way of formulas and formatting.

smartBI is an Excel reporting that allows a business to enhance the benefits available via Excel, while removing the leakage commonly associated with its use.

TRADITIONAL EXPORT to Excel

DATA

BUILD SMART
CANDY
PAYROLL
BANK CSV
OTHER

EXPORT

INTELLECTUAL PROPERTY

- Formatting errors
- Time wastage
- Sweat to make deadlines
- Unsure of accuracy
- Ungoverned environment
- Restricted reporting capability
- Untailored reporting



Initiate your Business Intelligence Journey

Microsoft have recently entered the business intelligence space offering BI to the masses via their suite of commonly used applications.

smartBI lends a hand to a construction business ready to initiate its BI journey. Access to information, when it is needed, and in flexible formats, requires a commitment to a process and in most cases, a change in reporting culture.

Stamping out inefficient report preparation, usually associated with MS Excel, is usually the first step.

smartBI offers a reporting engine for businesses who favor the formal use of Excel as a BI tool.

Starter Pack modules

- General ledger & boardroom pack
- Contract Costing
- Sub contractors
- Procurement
- Payroll
- Plant

Build Smart BUSINESS INFORMATION Module

Automated, real-time Excel reporting

